

**710J
BACKHOE LOADERS**



JOHN DEERE

PARTS CATALOG

**710J
BACKHOE LOADERS
PC10007 (Apr-07) English**

Worldwide Construction and Forestry Division

**Worldwide Edition
Litho In U.S.A. (Revised)
COPYRIGHT © 2007
DEERE & COMPANY
Moline, Illinois
All rights reserved**

customer service email: admin@servicemanualperfect.com

INTRODUCTION AND CUSTOMER INFORMATION

TX1015034A -UN-07DEC06



*SIDE VIEW OF JOHN DEERE BACKHOE LOADER
(MANUFACTURED 2007-)*

TO THE CUSTOMER

THE PART NUMBERS IN THIS PARTS CATALOG WERE CORRECT AT THE TIME YOUR CATALOG WAS PUBLISHED. IT IS OUR POLICY TO CONSTANTLY IMPROVE OUR MACHINES AND, THEREFORE, PART NUMBERS MAY CHANGE. WHEN ORDERING PARTS, VERIFY PART NUMBERS THROUGH YOUR DEALER.

(SPECIFICATIONS AND DESIGN SUBJECT TO CHANGE WITHOUT NOTICE.)

SERIAL NUMBER LOCATIONS

EACH 710J BACKHOE LOADER HAS SIX SERIAL NUMBERS, A PRODUCT IDENTIFICATION NUMBER PLATE, AN ENGINE SERIAL NUMBER PLATE, A HYDRAULIC PUMP SERIAL NUMBER PLATE, A MFWD AXLE SERIAL NUMBER PLATE, A TRANSMISSION SERIAL NUMBER PLATE, AND A REAR AXLE SERIAL NUMBER PLATE.

THE PRODUCT IDENTIFICATION NUMBER IS ON THE LEFT-HAND SIDE OF THE LOADER FRAME JUST ABOVE THE LIFT CYLINDER PIVOT BOSS.

THE ENGINE SERIAL NUMBER PLATE IS LOCATED ON THE RIGHT-HAND SIDE OF THE CYLINDER BLOCK NEAR THE FUEL PUMP.

THE MFWD AXLE SERIAL NUMBER PLATE IS LOCATED ON THE RIGHT-HAND (REAR) SIDE OF THE MFWD AXLE HOUSING.

THE REAR AXLE SERIAL NUMBER PLATE IS LOCATED NEAR THE REAR AXLEHOUSING FILL PLUG.

THE TRANSMISSION SERIAL NUMBER PLATE IS LOCATED ON THE BOTTOM-REAR FACE OF THE HOUSING.

THE HYDRAULIC PUMP SERIAL NUMBER IS LOCATED ON THE BOTTOM FACE OF THE PUMP.

LEFT-HAND SIDE, RIGHT-HAND SIDE, FRONT AND REAR OF THE BACKHOE LOADER ARE VIEWED BY FACING IN THE DIRECTION OF THE BACKHOE LOADER FORWARD TRAVEL.

LEFT-HAND SIDE, RIGHT-HAND SIDE, FRONT AND REAR OF THE BACKHOE COMPONENTS ARE DETERMINED WHEN SEATED IN THE BACKHOE OPERATING POSITION.

IF PRODUCT IDENTIFICATION NUMBERS OR SERIAL NUMBERS ARE REQUIRED FOR WARRANTY CLAIMS OR CORRESPONDENCE PERTAINING TO THIS PRODUCT. IT IS EXTREMELY IMPORTANT THAT ALL CHARACTERS BE FURNISHED. THIS POINT CANNOT BE OVEREMPHASIZED.

**Thanks very much for your reading,
Want to get more information,
Please click here, Then get the complete
manual**

JustClickHere 

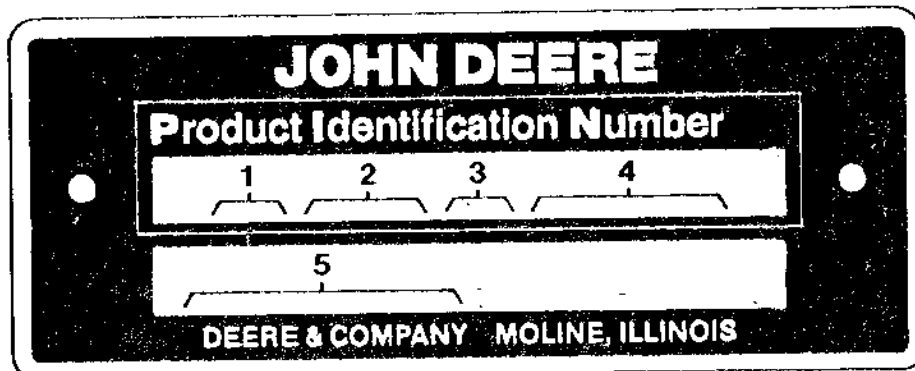
NOTE:

**If there is no response to click on the link above,
please download the PDF document first, and then
click on it.**

**Have any questions please write to me:
admin@servicemanualperfect.com**

PRODUCT IDENTIFICATION NUMBER

TP16004 -UN-01JAN94



TP16004

- | | |
|--|-------------------------------|
| 1. DESIGNATES BACKHOE MANUFACTURER | T0 - JOHN DEERE DUBUQUE WORKS |
| 2. DESIGNATES BACKHOE MODEL | 310 |
| 3. DESIGNATES BACKHOE CONFIGURATION | SJ |
| 4. DESIGNATES DUBUQUE WORKS SERIAL NUMBERS | |
| 5. DESIGNATES UNIT TYPE | BACKHOE LOADER |

ENGINE SERIAL NUMBER PLATE

T134833 -UN-23OCT00



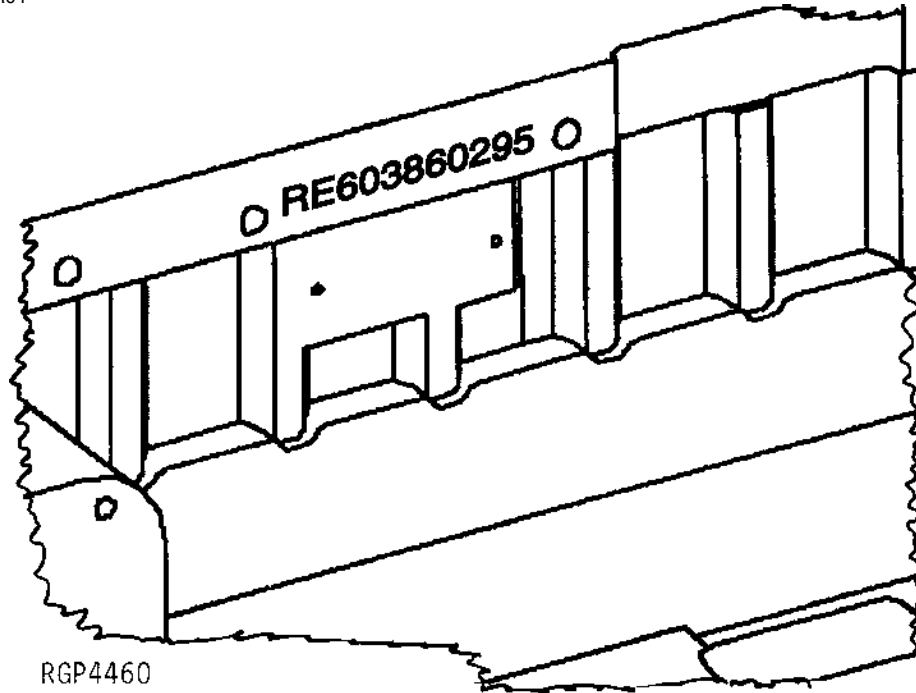
T134833

- | | |
|--|-------------------------------|
| 1. DESIGNATES ENGINE MANUFACTURER | P-JOHN DEERE MOTORES |
| 2. DESIGNATES NUMBER OF CYL. AND LITERS | 6068 (6.8 LITER) |
| 3. DESIGNATES FUEL TYPE OR SPECIAL CONDITIONS. | TT TURBOCHARGED DIESEL ENGINE |
| 4. DESIGNATES ENGINE SERIAL NUMBER | 123456 |
| 5. DESIGNATES THE ENGINE APPLICATION AND FACTORY USER. | PE6068TT061 |

SHORT BLOCK SERIAL NUMBER IDENTIFICATION

RGP4460

-UN-05MAR04



SERIAL NUMBER STAMPED INTO CASTING OF BLOCK NEAR PREVIOUS SERIAL NUMBER PLATE.

EXAMPLE: RE603860295

1. RE60386
2. 02
3. 95

SERVICE PART NUMBER
MONTH ASSEMBLED
YEAR ASSEMBLED

OPTION CODE STICKER

CD30524 -UN-27MAY98



TO ASSIST YOUR DEALER IN GIVING YOU PROMPT AND EFFICIENT SERVICE, AN OPTION CODE STICKER IS ATTACHED TO THE ROCKER ARM COVER. PLEASE REFERENCE THIS STICKER TO HELP IDENTIFY PARTS THAT ARE UNIQUE TO THE ORIGINAL EQUIPMENT MANUFACTURER'S APPLICATION BY OPTION CODE. THE BASE ENGINE CODE IDENTIFIES THE ENGINE MODEL.

PARTS THAT ARE COMMON TO MULTIPLE ENGINE MODELS WILL HAVE X'S IN THE MODEL COLUMNS ON EACH PAGE. CONVERSELY, UNIQUE ENGINES (AF01 AND TF001, FOR EXAMPLE) WILL BE IDENTIFIED AT THE TOP OF THE PAGE TO SIGNIFY "USE WITH" APPLICATIONS.

AF001 HF001

X
X

THIS IS DONE TO MINIMIZE THE DUPLICATION OF ART AND AT THE SAME TIME, IDENTIFY THE CORRECT PART NUMBERS BY OPTION CODE.

THE ORIGINAL EQUIPMENT MANUFACTURER FOR ACCESSORIES NOT SOLD BY YOUR DEALER, WILL BE RESPONSIBLE FOR WARRANTY SERVICE ON THIS CATEGORY OF ACCESSORIES.

MFWD AXLE SERIAL NUMBER PLATE

TP19438

-UN-01JAN94

The diagram shows a rectangular serial number plate with four mounting holes at the corners. At the top, it reads "Zahnradfabrik Passau GmbH". Below this, there are two main sections: "Type" and "Serial No.". The "Type" field is labeled with a bracket and the number 4. The "Serial No." field is labeled with a bracket and the number 5. Below these, there are two more sections: "Parts List No." (labeled with bracket 3) and "Total Ratio/Version:" (labeled with brackets 6 and 7). Under "Total Ratio/Version:", there are three rows, each with a "Ltri:" field (labeled with bracket 9) and a "List of Lubricants" field (labeled with bracket 8). The "List of Lubricants" field contains the text "TE-ML" and a bracketed area labeled 8. Below these sections, there is a "Customer's Code No." field (labeled with bracket 1).

TP19438

- 1. DESIGNATES CUSTOMER'S CODE NUMBER
- 2. DESIGNATES TYPE OF LUBRICANT
- 3. DESIGNATES ZF-PARTS-LIST NUMBER
- 4. DESIGNATES AXLE TYPE
- 5. DESIGNATES AXLE SERIAL NUMBER
- 6. DESIGNATES TOTAL - RATIO OF THE AXLE
- 7. DESIGNATES VERSION
- 8. DESIGNATES LUBRICANT SPECIFICATION
- 9. DESIGNATES CAPACITY

JOHN DEERE PART NUMBER
M1L-L-2105B, SAE90
4464 006 101
AP-11H
12345
20.28
SP. DIFF. (WITH OR WITHOUT SELF-LOCKING
DIFFERENTIAL)
05
LTR (DIFFERENTIAL CARRIER AND PLANETARY GEAR
ASSEMBLY

SERIAL NUMBER LISTING INFORMATION

SERIAL NUMBER INFORMATION IS LISTED TO SHOW ON WHICH MACHINES EACH PART CAN BE USED; FOR EXAMPLE:

- THE PART CAN BE USED ON ALL MACHINES.
- 000000- THE PART CAN BE USED ON ALL MACHINES BEGINNING WITH THE SERIAL NUMBER LISTED.
- 000000 THE PART CAN BE USED ON ALL MACHINES UP TO AND INCLUDING THE SERIAL NUMBER LISTED.
- 000000-000000 THE PART CAN BE USED ON ALL MACHINES BETWEEN AND INCLUDING THE SERIAL NUMBERS LISTED.

WHEN XXXXXX'S ARE LISTED IN PLACE OF A SERIAL NUMBER, A SERIAL NUMBER CHANGE WAS MADE BUT THE EXACT SERIAL NUMBER WAS NOT AVAILABLE WHEN THE CATALOG WAS PRODUCED.

DIRECTION ARROW

ARROWS ARE USED WITH ILLUSTRATIONS TO INDICATE THE FRONT OF THE UNIT. "RIGHT-HAND" AND "LEFT-HAND" SIDES OF THE LOADER OR TRACTOR PARTS ARE DETERMINED BY FACING IN THE DIRECTION OF MACHINE FORWARD TRAVEL

EXCEPTION: FOR ALL BACKHOE PARTS, "RIGHT-HAND" AND "LEFT-HAND" SIDES, "FRONT" AND "REAR" ARE DETERMINED WHEN SEATED FOR BACKHOE OPERATION.

BOX-ENCLOSED ILLUSTRATIONS

A KEY NUMBER, SHOWN IN THE PARTS LIST, IS ASSIGNED TO A BOX ENCLOSING ALL PARTS SOLD AS A SERVICE ASSEMBLY.

COMPLETE GOODS LISTINGS

COMPLETE GOODS ARE LISTED IN THE REMARKS COLUMN. ORDER SEPARATELY. DO NOT INCLUDE ON REPLACEMENT PARTS ORDER.

SI UNITS OF MEASURE

METRIC DIMENSIONS ARE GIVEN, WHERE APPLICABLE, THROUGHOUT THIS PARTS CATALOG.

CHANGE INDICATOR LINE

CHANGES AFFECTING THE ORDERING OF PARTS ARE IDENTIFIED BY VERTICAL LINES MARKED IN THE LEFT-HAND MARGIN OF REVISED PARTS LISTING IMAGES. A LINE IS ALSO AT THE LEFT-HAND EDGE OF THE SAME PART NUMBER IN THE NUMERICAL INDEX TO SHOW THE LOCATION OF REVISED INFORMATION.

REMARKS AND ABBREVIATIONS

THE FOLLOWING REMARKS AND ABBREVIATIONS MAY APPEAR THROUGHOUT THE PARTS CATALOG. REFER TO THE FOLLOWING CHART FOR TRANSLATIONS TO LANGUAGES OTHER THAN ENGLISH.

REMARKS AND ABBREVIATIONS

TX1007193

-UN-04MAY06

PHRASE	ENGLISH	FRANCAIS	DEUTSCH	ITALIANO	ESPAÑOL	SVENSKA
ALSO ORDER, ORD W/	Also order	Commander aussi	Ebenso bestellen	Ordinare anche	Pedir también	Beställ även
AMP	Ampere	Ampère	Ampere	Ampere	Amperio	Ampere
APPL, APPL ONLY	This application only	Uniquement pour cette utilisation	Nur für diese Anwendung	Solo per questa applicazione	Solo para este propósito	Endast för denna användning
AR	As required	Selon le besoin	Nach Bedarf	Secondo necessità	Según necesidad	Vid behov
ASSY	Complete assembly	Ensemble complet	Kompl.-Zusammenbau	Gruppo completo	Montaje completo	Komplett montering
CA, CONVENIENCE ASSY	Convenience assembly	Ensemble convenance	Komfort-Zusammenbau	Montaggio pratico	Montaje de conveniencia	Lämplig montering
CCW	Counter-clockwise	Sens anti-horaire	Gegen Uhrzeigersinn	Senso antiorario	A la izquierda	Moturs
COMPLETE	Complete	Complet	Vollständig	Completo	Completo	Fullständig
COMPLETE GOODS	Complete goods	Compléter marchandises	Vollst. Waren	Merci complete	Mercancías completas	Kompleta varor
CTL CUT TO LENGTH	Cut to length	Couper à la longueur	Auf Länge zurechtschneiden	Tagliare alla lunghezza	Corte a la longitud	Skära till längd
CW	Clockwise	Sens horaire	Im Uhrzeigersinn	In senso orario	A la derecha	Medurs
FOR	For	Pour	Für	Per	Para	För
FRONT	Front	Avant	Vorn	Anteriore	Frente	Fram
GAS	Gasoline	Essence	Benzin	Benzina	Gasolina	Bensin
HP	Horsepower	Puissance en cv	Leistung	Potenza	Potencia	Hästkraft
HFWD	Hydraulic Front-wheel Drive	Traction Avant Hydraulique	Hydraulischer Vorderradantrieb	Trazione Anteriore Idraulica	Traccion Delantera Hidraulica	Hydraulisk Framhjulsdraft
HS, HEAD MARKED	High strength, head marked	Haute résistance, tête marquée	Hochfest, vorn gekennzeichnet	Contrassegnato in testa, ad alta resistenza	Alta fuerza, marca en cabeza	Hög styrka, huvudmärkt
ID	Inside diameter	Diamètre intérieur	Innendurchmesser	Diametro interno	Diá. interior	Innerdiameter
INCH	Inch	Pouce	In.	Pollice	Pulg.	Tum
INCL KEYS	Includes keys...	Comprend les positions...	Einschließlich Schlüssel...	Include le chiavette...	Incluye posiciones...	Inklusive nycklar...
INCL, INCLUDES	Includes...	Comprend...	Enthält...	Include...	Incluye...	Inkluderar...
INCLUDES PARTS/ ITEMS MARKED	Includes parts/items marked...	Comprend les pièces/articles marqués...	Enthält gekennzeichnete Teile/Pos. ...	Include i pezzi e gli elementi contrassegnati...	Incluye piezas marcadas...	Inkluderar markerade delar/artiklar...
INNER	Inner	Intérieur	Innerer	Interno	Interno	Inre, invändig
KIT	Kit	Kit	Kit	Kit	Juego	Sats
L	Number of links	Nombre de maillons	Anzahl der Glieder	Numero di maglie	Nº de eslabones	Antal länkar
LGTH	Length	Longueur	Länge	Lunghezza	Longitud	Längd
LGP	Low Ground Pressure	Faible Pression Au Sol	Niederer Bodendruck	Bassa Pressione Sul Suolo	Baja Presion Sobre El Suelo	Laagt Marktryck
LH	Left-hand	Gauche	Links	Sinistra	Izquierda	Vänster
LT	Long Track	Chenille Longue	Mit Langem Laufwerk	Cingolo Lungo	Cadena Largo	Laangt Larvband
LOW, LOWER	Lower	Inférieur	Unterer	Inferiore	Inferior	Nedre
MAKE FROM, MF MARKED	Make from Marked	Faireavec Marqué	Herstellen von Markiert	Fabbricare da Contrassegnato	Hacer de Marcado	Tillverka av Märkt

TX1007193

REMARKS AND ABBREVIATIONS

TX1007195

-UN-04MAY06

PHRASE	ENGLISH	FRANCAIS	DEUTSCH	ITALIANO	ESPAÑOL	SVENSKA
MATCHED SET	Matched set	Ensemble assorti	Passender Satz	Set abbinato	Sistema emparejado	Anpassad sats
MFWD	Mechanical Front-Wheel Drive	Pont Avant	Allradantrieb	Ruota Motrice Meccanica Anteriore	Traccion Delantera Mecanica	Mekanisk Framhjulsdrift
NA, NOT USED THIS APPL	Not used this application	Ne sert pas pour cette application	In dieser Anwendung nicht benutzt	Non usato in questa applicazione	No se usa en esta aplicación	Ej använd i detta sammanhang
NLA	No longer available	Épuisé	Nicht mehr lieferbar	Non più disponibile	Descontinuado	Ej längre tillgänglig
NSEP	Not supplied separately	Non livré séparément	Nicht einzeln lieferbar	Non fornito separatamente	No se suministra por separado	Kan ej erhållas separat
OD	Outside diameter	Diamètre extérieur	Außendurchmesser	Diametro esterno	Diá. exterior	Ytterdiameter
OPTIONAL	Optional	En option	Wahlweise	Opzionale	Opcional	Valfri
OR	Or	Ou	Oder	Oppure	O	Eller
ORD, ORDER	Order	Commander	Bestellen	Ordinare	Pídase	Order
OS	Oversize	Sur-dimension	Übergröße	Maggiorato	Sobretamaño	Överdimension
OUTER	Outer	Externe	Äußerer	Esterno	Externo	Yttre, utvändig
PKG, PACKG	Package, Packet of	Emballage, paquet de	Verpackung, verpackt mit	In confezione da	Paquete de	I sats; paket
PTO	Power Take Off	Prise De Force	Zapfwelle	Presa Di Forza	Toma De Fuerza	Kraftuttag
RATIO	Ratio	Rapport	Übersetzungs-verhältnis	Rapporto	Índice	Förhållande
REAR	Rear	Arrière	Hinten	Posteriore	Trasero	Bak; bakre
REMAN	Remanufactured	Echange Standard	Generalveberholt	Refatto	Refabricador por	Renoverad
REPL	Replaces	Remplace	Ersetzt	Sostituisce	Sustituye	Ersätter
RH	Right-hand	Droit	Rechts	Destra	Derecha	Höger
SN	Serial number	Numéro de série	Seriennummer	Numero di serie	Nº de serie	Seriennummer
STD	Standard	Standard	Standard	Standard	Normal	Standard
SUB	Replaced by	Remplacé par	Ersetzt durch	Sostituito da	Sustituido por	Ersatt med
SUB COMPONENTS	Substitute components (of the kit or assy)	Substituer les composants (du kit ou de l'ensemble)	Komponenten ersetzen (des Kits oder der Baugruppe)	Sostituire i componenti (del kito del gruppo)	Sustituir los componentes	Ersätta komponenterna (i satsen eller monteringen)
SUB FOR	Substitutes for	Remplace	Ersatz für	Sostituisce	Sustitución para	Ersätter
TEETH, Z	Number of gear teeth	Nombre de dents d'engrenages	Zahl der Zahnradzähne	Numero di denti dell'ingranaggio	Nº de dientes de engranaje	Antal redskapständer
TK	Thickness	Épaisseur	Stärke	Spessore	Espesor	Tjocklek
UP, UPPER	Upper	Supérieur	Oberer	Superiore	Superior	Övre
US	Undersize	Sous-dimension	Untergröße	Minorato	Subtamaño	Underdimension
USE WITH	Use with	À utiliser avec	Verwenden mit	Usare con	Usar con	Använd med
USE UNTIL EXHAUSTED	Use until exhausted	Utilisation jusqu'à épuisé	Verwenden, bis erschöpft	Usare fino all'esaurimento	Usar hasta agotar	Använda till uttömd
W/	With	Avec	Mit	Con	Con	Med; inklusive
W/O	Without	Sans	Ohne	Senza	Sin	Utän; exklusive
WHOLE GOODS	Whole goods	Marchandises entières	Vollständige Waren	Merci intere	Mercancías enteras	Hela varor
XLT	Extra Long Track	Chenille Extra Longue	Mit Extra Langem Laufwerk	Cingolo Extra Lungo	Cadena Extra Larga	Extra Laangt Larvband
VEC	Vehicle Electronic Controller	Controlleur Electronique Du Vehicule	Elektronisches Steuergeraet Des Fahrzeugs	Unità Di Comando Electronica Del Veicolo	Unidad de Control Electronico del Vehiculo	Elektronisk Fordonsstyrenhet
VLC	Vehicle Load Center	Coffret De Repartition Du Vehicule	Verteilerstation Des Fahrzeugs	Centro Di Carico Del Veicolo	Centro De Cargas Del Vehiculo	Fordonets Elcentral

TX1007195

ALPHABETICAL INDEX

	PAGE		PAGE
A			
A/C DIODE.....	1674-16	AUXILIARY CUTTING EDGE	
A/C DIODE, ELECTRICAL CONNECTOR	1674-24	2.0 CUBIC YARD.....	3102-14
A/C SWITCH.....	1674-16	AUXILIARY CUTTING EDGE,MULTI-PURPOSE	
A/C WIRING HARNESS	1674-16	BUCKET.....	3102-8
A/C WIRING HARNESS, ELECTRICAL CONNECTOR	1674-24	AUXILIARY EQUIPMENT HYDRAULICS, EXTENDIB	
ACCELERATOR ELECTRICAL.....	0515-2	LE DIPPERSTICK.....	3363-18
ACCU-SWING VALVE KIT.....	3362-29A	AUXILIARY EQUIPMENT HYDRAULICS, STANDARD	
ACCUMULATOR.....	1060-6	DIPPERSTICK.....	3363-16
ACCUMULATOR SEAL KIT.....	2160-12	AUXILIARY FUNCTION PEDAL	
ACCUMULATOR VALVE.....	2160-12	(PILOT CONTROL).....	3315-13A
ACCUMULATOR VALVE COMPONENTS	2160-14	AUXILIARY HYDRAULIC CONTROL SWITCH	1674-11A
ACCUMULATOR, MANIFOLD		AUXILIARY LOADER VALVE.....	3162-2
(PILOT CONTROL).....	3362-30	AUXILIARY SECTION RELIEF VALVE	3162-8
ACCUMULATOR, RIDE CONTROL.....	2160-12	AUXILIARY SECTION, BACKHOE VALVE	3362-22
ADAPTER STC.....	0960-6	AUXILIARY SECTION, LOADER VALVE	3162-8
ADAPTER, ENGINE OIL COOLER (TT061).....	0400-38	AUXILIARY VALVE.....	3362-28
ADAPTER,EXHAUST (TT061).....	0400-14	AUXILIARY VALVE SOLINOID.....	3362-28
ADAPTERS STC.....	0960-8	AUXILIARY, LOW PRESSURE RETURN KIT	3363-28
AIR CLEANER.....	0520-2	AXLE HOUSING.....	0201-2
AIR CLEANER ELEMENT.....	0520-2	AXLE HOUSING ASSEMBLY (MFWD).....	0250-4
AIR CLEANER HOSE.....	0520-2	AXLE HOUSING, FRONT (WITHOUT MFWD).....	0230-2
AIR CLEANER RESTRICTION INDICATOR SWITCH	0520-2	AXLE MOUNTING HARDWARE, REAR.....	0201-6
AIR CONDITIONING.....	1830-6	AXLE ROLLER BEARING.....	0201-2
AIR CONDITIONING COMPRESSOR	1830-12	AXLE SHAFT.....	0201-2
AIR CONDITIONING COMPRESSOR		AXLE SWIVEL HOUSING, FRONT	
MOUNTING BRACKETS.....	1830-12	(WITHOUT MFWD).....	0230-3
AIR CONDITIONING COMPRESSOR DIODE.....	1674-8	AXLE, FRONT (MFWD).....	0250-2
AIR CONDITIONING COMPRESSOR DRIVE BELT.....	1830-12	AXLE, FRONT (WITHOUT MFWD).....	0230-1
AIR CONDITIONING COMPRESSOR HOSES.....	1830-12		
AIR CONDITIONING CONDENSER.....	1830-12	B	
AIR CONDITIONING DUCTS.....	1830-2	BACK-UP ALARM.....	2004-3
AIR CONDITIONING DUCTS.....	1830-4	BACKHOE BOOM.....	3344-2
AIR CONDITIONING RECEIVER DRYER.....	1830-12	BACKHOE BOOM CYLINDER.....	3365-2
AIR HEATER SPACER (TT061).....	0400-20	BACKHOE BOOM CYLINDER REPAIR KIT	3365-2
AIR INTAKE (TT061).....	0400-20	BACKHOE BOOM LOCK.....	3315-20
AIR PRE-CLEANER.....	0520-4	BACKHOE BOOM LOCK CONTROL LEVER.....	3315-16
AIR SUSPENSION SEAT COMPRESSOR.....	1821-16	BACKHOE BOOM PINS.....	3344-2
AIR SUSPENSION SEAT SWITCH.....	1674-16	BACKHOE BOOM PROTECTION KIT.....	3344-4
ALARM, BACK-UP.....	2004-3	BACKHOE BUCKET.....	3302-2
ALARM, TRAVEL WARNING.....	2004-3	BACKHOE BUCKET CUTTING EDGE.....	3302-2
ALT. ADJUSTING STRAP (TT061).....	0400-58	BACKHOE BUCKET CYLINDER.....	3365-3
ALT. MOUNTING BRACKETS (TT061).....	0400-58	BACKHOE BUCKET CYLINDER HYDRAULICS.....	3363-6
ALTERNATE SWITCH PLACEMENT.....	1674-16	BACKHOE BUCKET CYLINDER PIN.....	3345-2
ALTERNATOR.....	1672-4	BACKHOE BUCKET CYLINDER REPAIR KIT	3365-3
ALTERNATOR FAN.....	1672-4	BACKHOE BUCKET PINS.....	3302-2
ALTERNATOR PULLEY.....	1672-4	BACKHOE CONSOLE	
ANCHOR, TIE BAND MOUNT, HARNESS.....	1673-6	(PILOT CONTROL).....	1816-4
ANGLE,BACKREST ADJUSTMENT.....	1821-2	BACKHOE CONTROL LEVER CONVERSION LINKAGE	
ANTENNA, RADIO.....	2001-2	(SAE PATTERN).....	3315-24
ANTI-CAVITATION, BOOM SECTION.....	3162-4	BACKHOE CONTROL VALVE.....	3362-6
ANTI-CAVITATION, BUCKET SECTION.....	3162-6	BACKHOE CONTROL VALVE.....	3362-8
ANTI-THEFT LABELS.....	1675-10	BACKHOE CONTROL VALVE LINKAGE, TWO LEVER.....	3315-6
ARM RESTS.....	1821-2	BACKHOE CONTROL VALVE SECTIONS.....	3362-8
ARM, LOADER LIFT.....	3140-2	BACKHOE CONTROLS COVER.....	1816-2
ARM, PILOT CONTROLLER		BACKHOE CONTROLS, PILOT CONTROLLER ARM	
(LEFT SIDE).....	1816-14	(LEFT SIDE).....	1816-14
ARM, PILOT CONTROLLER		BACKHOE CONTROLS, PILOT CONTROLLER ARM	
(RIGHT SIDE).....	1816-16	(RIGHT SIDE).....	1816-16
ARM, STANDARD.....	3346-2	BACKHOE CROWD CYLINDER.....	3365-4
ARM,STABLIZER.....	3348-2	BACKHOE CROWD CYLINDER REPAIR KIT	3365-4
ARMS, ROCKER (TT061).....	0400-23	BACKHOE LEVERS COVER.....	1816-2
ATTACHMENT PLUMBING KIT.....	3363-44	BACKHOE STABILIZER CYLINDER.....	3365-10
AUDIBLE ALARM, QUICK COUPLER PIN ENGAGEM		BACKHOE STABILIZER CYLINDER HYDRAULICS	3363-2
ENT.....	1674-5C	BACKHOE STABILIZER CYLINDER REPAIR KIT.....	3365-10
AUXILIARY CUTTING EDGE.....	3102-4	BACKHOE SWING CYLINDER.....	3365-6

ALPHABETICAL INDEX - CONTINUED

	PAGE		PAGE
BACKHOE SWING CYLINDER REPAIR KIT.....	3365-6	BOOM SECTION RELIEF VALVE.....	3362-12
BACKHOE SWING LOCK CONTROL LEVER.....	3315-16	BOOM SECTION, ANTI-CAVITATION RELIEF.....	3162-4
BACKHOE VALVE AUXILIARY SECTION.....	3362-22	BOOM SECTION, BACKHOE VALVE.....	3362-12
BACKHOE VALVE BOOM SECTION.....	3362-12	BOOM SECTION, LOADER VALVE.....	3162-4
BACKHOE VALVE BOOM,PILOT SECTION.....	3362-40	BOOM SERVICE LOCK BAR.....	1313-2
BACKHOE VALVE BUCKET SECTION.....	3362-14	BOOM, BACKHOE.....	3344-2
BACKHOE VALVE BUCKET, PILOT SECTION.....	3362-42	BOOM, BACKHOE, PINS.....	3344-2
BACKHOE VALVE CROWD SECTION.....	3362-16	BOOM, BACKHOE, PROTECTION KIT.....	3344-4
BACKHOE VALVE CROWD, PILOT SECTION.....	3362-44	BOOM, LOADER.....	3140-2
BACKHOE VALVE EXTENDIBLE SECTION.....	3362-20	BOOM, PILOT SECTION RELIEF VALVE.....	3362-40
BACKHOE VALVE INLET SECTION.....	3362-10	BOOM,PILOT SECTION, BACKHOE VALVE.....	3362-40
BACKHOE VALVE MOUNTING PLATE.....	3315-2	BOOT, MECHANICAL SUSPENDED SEAT.....	1821-8
BACKHOE VALVE MOUNTING PLATE (PILOT CONTROL).....	3315-4	BOOT, WINCH CONTROL (PILOT CONTROL).....	1816-4
BACKHOE VALVE SWING SECTION.....	3362-18	BOX, BATTERY.....	1913-2
BACKHOE VALVE SWING, PILOT SECTION.....	3362-46	BOX, TOOL.....	1913-2
BACKHOE VALVE TWO LEVER CONTROL LINKAGE.....	3315-6	BRACKET, AIR CLEANER MOUNTING.....	0520-2
BACKREST ADJUSTMENT ANGLE.....	1821-2	BRACKET, ENGINE MOUNTING.....	0540-2
BAFFLE, HEAT AND NOISE.....	1834-2	BRACKET, EXTERNAL REAR VIEW MIRROR.....	2002-3
BAFFLES, RADIATOR.....	0510-4	BRACKET, FINAL FUEL FILTER (TT061).....	0400-42
BAR, CYLINDER SERVICE LOCK.....	1313-2	BRACKET, INTERIOR REAR VIEW MIRROR.....	2002-4
BARRIER, HEAT AND NOISE.....	1834-2	BRACKET, LICENCE PLATE.....	1314-2
BATTERIES,DUAL.....	1671-4	BRACKET, PRIMARY FUEL FILTER (TT061).....	0400-40
BATTERY BOX.....	1913-2	BRACKET, SELECTIVE FLOW MOUNTING.....	3362-24
BATTERY COVER.....	1913-2	BRACKET, STRIKER BOLT.....	1910-2
BATTERY DISCONNECT SWITCH.....	1671-6	BRACKET, BACKHOE VALVE MOUNTING.....	3315-2
BEACON, ROTATING.....	1673-2	BRACKET, BACKHOE VALVE MOUNTING (PILOT CONTROL).....	3315-4
BEACON, STROBE.....	1673-2	BRACKET,RADIO ANTENA.....	2001-2
BEARING KIT.....	0325-1	BRACKET,STABLIZER VALVE MOUNTING.....	3315-2
BEARING, DIFFERENTIAL QUILL.....	1011-2	BRACKETS ,SEAT.....	1821-2
BEARING,CRANKSHAFT THRUST (TT061).....	0400-2	BRACKETS, ALT. ADJUSTING (TT061).....	0400-58
BEARING,FRONT AXLE HOUSING (WITHOUT MFWD).....	0230-2	BRAKE CHARGE VALVE SUPPLY.....	1060-6
BEARINGS, MAIN (TT061).....	0400-2	BRAKE DISK.....	1011-2
BEARINGS,CONNECTING ROD (TT061).....	0400-26	BRAKE HOUSING.....	1011-2
BELL HOUSING.....	0341-4	BRAKE LIGHT PRESSURE SWITCH.....	1060-2
BELLVILLEWASHER, FIRST GEAR.....	0350-4	BRAKE PEDAL.....	1060-2
BELLVILLEWASHER, FORWARD.....	0350-12	BRAKE PISTON.....	1011-2
BELLVILLEWASHER, REVERSE.....	0350-14	BRAKE SERVICE, HYDRAULICS.....	1060-8
BELLVILLEWASHER, 2ND GEAR.....	0350-6	BRAKE VALVE.....	1060-2
BELLVILLEWASHER, 3RD GEAR.....	0350-8	BRAKE VALVE.....	1060-4
BELLVILLEWASHER, 4TH GEAR.....	0350-10	BRAKE VALVE HOUSING.....	1060-2
BELT TENSIONER, FAN DRIVE (TT061).....	0400-60	BRAKE VALVE MOUNTING PLATE.....	1060-2
BELT, SEAT.....	1821-14	BRAKE, PARK.....	1111-2
BELT, TETHER.....	1821-16	BRAKES, SERVICE.....	1011-2
BELT,AIR CONDITIONING COMPRESSOR DRIVE.....	1830-12	BREATHER FILTER, HYDRAULIC RESERVOIR.....	2160-10
BELT,FAN DRIVE.....	0510-2	BREATHER, TRANSMISSION.....	0341-4
BEVEL DRIVE GEAR (MFWD).....	0250-10	BUCKET CYLINDER HYDRAULIC HOSES, EXTENDIBLE DIPPERSTICK.....	3363-8
BLOCK ASSEMBLY, ENGINE SHORT (TT061).....	0400-32	BUCKET CYLINDER HYDRAULICS, BACKHOE.....	3363-6
BLOCK, CLIP.....	1674-26	BUCKET CYLINDER LINES, BACKHOE.....	3363-6
BLOCK, FUSE.....	1674-26	BUCKET CYLINDER PIN.....	3346-2
BLOCK, ICE CUBE.....	1674-26	BUCKET CYLINDER PIN, BACKHOE.....	3345-2
BLOCK,CYLINDER (TT061).....	0400-28	BUCKET CYLINDER REPAIR KIT, BACKHOE.....	3365-3
BLOWER MOTOR PRESSURIZER.....	1830-6	BUCKET CYLINDER SPACER, METALLIC.....	3346-2
BOLT, STRIKER, HOOD.....	1910-2	BUCKET CYLINDER, BACKHOE.....	3365-3
BOLTS, REAR AXLE MOUNTING.....	0201-6	BUCKET CYLINDER, LOADER.....	3165-4
BOOM CYL.KIT, LOWERING DEVICE,CONTOLLED.....	3363-20	BUCKET CYLINDER, MULTI-PURPOSE.....	3102-13
BOOM CYL.KIT,CONTROLLED LOWERING DEVICE.....	3363-20	BUCKET LEVELING LINKAGE.....	3115-2
BOOM CYLINDER HYDRAULIC HOSES.....	3363-4	BUCKET LEVELING ROD.....	3115-2
BOOM CYLINDER HYDRAULIC OIL LINES.....	3363-4	BUCKET LEVELING YOKE.....	3115-2
BOOM CYLINDER PINS, LOADER.....	3140-4	BUCKET LINK PIN.....	3346-2
BOOM CYLINDER REPAIR KIT, BACKHOE.....	3365-2	BUCKET LINKAGE, LOADER.....	3140-8
BOOM CYLINDER, BACKHOE.....	3365-2	BUCKET LINKS AND PINS,BACKHOE.....	3345-2
BOOM LEVER LOCK COVER.....	1816-10	BUCKET PINS, LOADER.....	3102-6
BOOM LIFT CYLINDER.....	3165-2	BUCKET SECTION RELIEF VALVE.....	3162-6
BOOM LOCK, BACKHOE.....	3315-20	BUCKET SECTION RELIEF VALVE.....	3362-14
BOOM SECTION RELIEF VALVE.....	3162-4		

ALPHABETICAL INDEX - CONTINUED

	PAGE		PAGE
BUCKET SECTION, ANTI-CAVITATION RELIEF	3162-6	CHARGE PUMP,TRANSMISSION.....	0360-1
BUCKET SECTION, BACKHOE VALVE	3362-14	CHARGE VALVE, BRAKE	1060-6
BUCKET SECTION, LOADER VALVE	3162-6	CHECK VALVE, COMBO VALVE	3162-12
BUCKET SENSOR TUBE.....	3115-2	CHECK VALVE, LOADER VALVE LOAD SENSE	3162-12
BUCKET, MULTI-PURPOSE.....	3102-8	CLAMP, SHOVEL	3140-6
BUCKET, PILOT SECTION RELIEF VALVE	3362-42	CLIP, BLOCK.....	1674-26
BUCKET, PILOT SECTION, BACKHOE VALVE	3362-42	CLUTCH ASSEMBLY, FIRST GEAR.....	0350-4
BUCKET, BACKHOE	3302-2	CLUTCH ASSEMBLY, FORWARD	0350-12
BUCKET, LOADER		CLUTCH ASSEMBLY, FOURTH GEAR	0350-10
1.24 CUBIC METER.....	3102-4	CLUTCH ASSEMBLY, REVERSE	0350-14
BUCKET, LOADER		CLUTCH ASSEMBLY, SECOND GEAR.....	0350-6
1.43 CUBIC METER.....	3102-4	CLUTCH ASSEMBLY, THIRD GEAR	0350-8
BUCKET, LOADER, COUPLER		CLUTCH BACKING PLATE.....	0350-4
2.0 CUBIC YARD.....	3102-14	CLUTCH BACKING PLATE.....	0350-6
BUCKET, MULTI-PURPOSE	3102-10	CLUTCH BACKING PLATE.....	0350-8
BUCKET, MULTI-PURPOSE	3102-16	CLUTCH BACKING PLATE.....	0350-10
BUSHING, EXTENDIBLE ARM	3346-4	CLUTCH BACKING PLATE.....	0350-12
BUSHING, MULTI-PURPOSE BUCKET	3102-8	CLUTCH BACKING PLATE.....	0350-14
BUSHING, MULTI-PURPOSE BUCKET CYLINDER.....	3102-10	CLUTCH CARRIER, FIRST GEAR	0350-4
BUSHING, MULTI-PURPOSE BUCKET CYLINDER.....	3102-16	CLUTCH CARRIER, FORWARD	0350-12
BUSHING, SWING CYLINDER	1740-2	CLUTCH CARRIER, FOURTH GEAR	0350-10
BUSHING, SWING FRAME	1740-2	CLUTCH CARRIER, REVERSE	0350-14
BUSHING, FRONT AXLE HOUSING		CLUTCH CARRIER, SECOND GEAR.....	0350-6
(WITHOUT MFWD)	0230-2	CLUTCH CARRIER, THIRD GEAR	0350-8
BUSHINGS, LOADER LIFT ARM	3140-2	CLUTCH DISK, PARK BRAKE.....	1111-2
		CLUTCH, STARTING MOTOR (TT061)	0400-46
		COLD WEATHER STARTING AID.....	0505-2
		COLD WEATHER STARTING AID SOLENOID	0505-2
		COLUMN, STEERING	0960-4
		COLUMN, TILT STEERING	0960-4
		COMBO VALVE CHECK VALVE	3162-12
		COMPRESSOR DIODE, A/C.....	1674-8
		COMPRESSOR MOUNTING BRACKETS,	
		AIR CONDITIONING.....	1830-12
		COMPRESSOR, AIR CONDITIONING.....	1830-12
		COMPRESSOR, AIR SUSPENSION SEAT	1821-16
		CONDENSER, AIR CONDITIONING.....	1830-12
		CONNECTING ROD (TT061)	0400-26
		CONNECTING ROD BEARINGS (TT061).....	0400-26
		CONNECTOR, DIODE.....	1674-18
		CONNECTOR, DIODE.....	1674-20
		CONNECTOR, RELAY.....	1674-18
		CONNECTOR, RELAY.....	1674-20
		CONNECTORS, ELECTRICAL, ENGINE HARNESS	1674-18
		CONNECTORS, ELECTRICAL, LOADER HYDRAULIC	
		COUPLER HARNESS.....	1674-22
		CONNECTORS, ELECTRICAL, TRANSMISSION HAR	
		NESS.....	1674-20
		CONSOLE WIRING HARNESS, SIDE,	
		CAB.....	1674-2
		CONSOLE WIRING HARNESS, SIDE,	
		CAB.....	1674-4
		CONSOLE, BACKHOE	
		(PILOT CONTROL)	1816-4
		CONSOLE, FRONT	1816-8
		CONTROLLED LOWERING DEVICE, BOOM CYL. KIT	3363-20
		CONTROL CABLE, HEATER VALVE	1830-6
		CONTROL COVER, BACKHOE, TWO LEVER	1816-2
		CONTROL HANDLE, PILOT, BUTTON FUNCTION KIT	3362-38
		CONTROL LEVER, BACKHOE BOOM LOCK.....	3315-16
		CONTROL LEVER, BACKHOE SWING LOCK	3315-16
		CONTROL LEVER, FORWARD, NEUTRAL AND	
		REVERSE	0315-2
		CONTROL VALVE ELECTRICAL HARNESS AND	
		MOUNTING BRACKET	1674-11A
		CONTROL VALVE LINKAGE, STABILIZER	3315-22
		CONTROL VALVE LINKAGE, BACKHOE, TWO LEVER.....	3315-6

C

CAB DOME LIGHT	2001-2
CAB DOOR CYLINDER.....	1814-2
CAB DOOR HINGES	1814-2
CAB DOORS	1814-2
CAB FRAME	1811-4
CAB HEADLINER	1811-4
CAB HEATER	1830-6
CAB HEATER DUCTS	1830-2
CAB HEATER DUCTS	1830-4
CAB MOUNTING ISOLATORS	1811-4
CAB REAR WINDOWS.....	1814-8
CAB ROOF	1811-6
CAB SIDE WINDOW LATCH	1814-2
CAB SIDE WINDOWS	1814-2
CAB SKIRT	1927-2
CAB WINDSHIELD.....	1814-6
CAB WIRE HARNESS	1674-2
CAB WIRE HARNESS.....	1674-4
CABLE, HEATER VALVE CONTROL.....	1830-6
CABLE, NEGITIVE	1674-18
CABLE, POSITIVE.....	1674-18
CABLE, RADIO	2001-2
CABLE, RETURN-TO-DIG.....	3115-2
CABLE, SELF-LEVELING	3115-2
CABLES, STABILIZER CONTROL	3315-22
CABLES, DUAL BATTERY	1671-4
CAN RESISTOR	1674-2
CAN RESISTOR	1674-4
CAN TERMINATION RESISTOR	1674-8
CANOPY	1811-2
CAP, ENGINE OIL FILL INLET (TT061).....	0400-1
CAP, FUEL TANK	0560-2
CAP, RADIATOR	0510-2
CAP, MAIN BEARING (TT061)	0400-28
CARRIER, PLANETARY PINION.....	0201-4
CENTER KICK PANEL, REAR	1812-2
CHARGE PUMP OIL FILTER	0360-1
CHARGE PUMP, AXIAL BEARING.....	0360-1

ALPHABETICAL INDEX - CONTINUED

	PAGE		PAGE
CONTROL VALVE PISTON	0360-2	CRANKSHAFT (TT061)	0400-2
CONTROL VALVE SECTIONS, BACKHOE	3362-8	CRANKSHAFT GEAR (TT061)	0400-2
CONTROL VALVE, BACKHOE	3362-6	CRANKSHAFT PULLEY (TT061)	0400-49
CONTROL VALVE, BACKHOE	3362-8	CRANKSHAFT PULLEY & DAMPER (TT061)	0400-49
CONTROL VALVE, LOADER/STABILIZER	3162-2	CRANKSHAFT THRUST BEARING (TT061)	0400-2
CONTROL VALVE, PILOT, LEFT	3362-34	CROWD CYL.KIT, CONTROLLED LOWERING	3363-22
CONTROL VALVE, PILOT, RIGHT	3362-36	CROWD CYL.KIT, LOWERING DEVICE, CONTROLLED	3363-22
CONTROL VALVE, SELECTIVE FLOW SOLENOID	3362-24	CROWD CYLINDER HYDRAULIC HOSES	3363-10
CONTROL VALVE, SELECTIVE FLOW SOLENOID	3362-28	CROWD CYLINDER HYDRAULIC OIL LINES	3363-10
CONTROL VALVE, TRANSMISSION	0360-2	CROWD CYLINDER HYDRAULICS	3363-10
CONTROL, RIDE	2160-12	CROWD CYLINDER PIN	3346-2
CONTROL, RIDE (VALVE)	2160-14	CROWD CYLINDER REPAIR KIT, BACKHOE	3365-4
CONTROL, RIDE, ELECTRICAL	1675-2	CROWD CYLINDER, BACKHOE	3365-4
CONTROL, RIDE, ELECTRICAL	1675-4	CROWD SECTION RELIEF VALVE	3362-16
CONTROLLED LOWERING DEVICE, CROWD CYL. KIT	3363-22	CROWD SECTION, BACKHOE VALVE	3362-16
CONTROLLER ARM, PILOT		CROWD SPACER, SYNTHETIC	3346-2
(LEFT SIDE)	1816-14	CROWD, PILOT SECTION RELIEF VALVE	3362-44
CONTROLLER ARM, PILOT		CROWD, PILOT SECTION, BACKHOE VALVE	3362-44
(RIGHT SIDE)	1816-16	CUSHIONS, SEAT	1821-2
CONTROLLER, LEFT HAND VALVE	3362-34	CUTTING EDGE, BACKHOE BUCKET	3302-2
CONTROLLER, RIGHT HAND VALVE	3362-36	CUTTING EDGE, LOADER BUCKET	3102-4
CONTROLLER, VIECHLE	1674-5A	CUTTING EDGE, LOADER COUPLER BUCKET	
CONVERSION, BACKHOE CONTROL LEVER		2.0 CUBIC YARD	3102-14
LINKAGE (SAE PATTERN)	3315-24	CUTTING EDGE, MULTI-PURPOSE BUCKET	3102-8
CONVERTER, TORQUE	0350-1	CYLINDER BLOCK (TT061)	0400-28
COOLANT HEATER, ENGINE (TT061)	0400-56	CYLINDER CAB DOOR	1814-2
COOLANT RECOVERY TANK	0510-2	CYLINDER HEAD (TT061)	0400-12
COOLANT, ENGINE HEATER	0505-4	CYLINDER HEAD GASKET (TT061)	0400-12
COOLER, ENGINE OIL (TT061)	0400-38	CYLINDER LINER (TT061)	0400-26
COOLER, FUEL	0560-4	CYLINDER LINER O-RING KIT (TT061)	0400-26
COOLER, HYDRAULIC OIL	0510-2	CYLINDER PIN, BACKHOE BUCKET	3345-2
COOLER, TRANSMISSION OIL	0510-2	CYLINDER PINS, LOADER BOOM	3140-4
CORD, MANUAL HOLDER ATTACHMENT	1811-2	CYLINDER REPAIR KIT, BACKHOE BOOM	3365-2
CORNER WINDOWPANE, REAR	1814-8	CYLINDER REPAIR KIT, BACKHOE BUCKET	3365-3
COUNTERWEIGHT FRAME	1749-3	CYLINDER REPAIR KIT, BACKHOE CROWD	3365-4
COUNTERWEIGHT, FRONT	1749-2	CYLINDER REPAIR KIT, BACKHOE STABILIZER	3365-10
COUPLER FRAME, FORKLIFT	3103-2	CYLINDER REPAIR KIT, BACKHOE SWING	3365-6
COUPLER, CYLINDER, FRONT	3104-4	CYLINDER ROD LOCK BAR	1313-2
COUPLER, HYDRAULIC HOSES	3163-2	CYLINDER, BACKHOE BOOM	3365-2
COUPLER, HYDRAULIC, FRONT	3104-2	CYLINDER, BACKHOE BUCKET	3365-3
COUPLER, LOADER BUCKET VALVE	3163-6	CYLINDER, BACKHOE BUCKET HYDRAULICS	3363-6
COUPLER, LOADER, ELECTRICAL	1675-10	CYLINDER, BACKHOE CROWD	3365-4
COUPLER, QUICK CONNECT	2160-2	CYLINDER, BACKHOE STABILIZER	3365-10
COUPLER, QUICK CONNECT	2160-4	CYLINDER, BACKHOE STABILIZER HYDRAULICS	3363-2
COVER, BACKHOE CONTROLS	1816-2	CYLINDER, BACKHOE SWING	3365-6
COVER, BACKHOE LEVERS	1816-2	CYLINDER, BOOM LIFT	3165-2
COVER, BATTERY	1913-2	CYLINDER, EXTENSION	3365-14
COVER, BOOM LEVER LOCK	1816-10	CYLINDER, FRONT COUPLER	3104-4
COVER, BOOM LOCK LEVER		CYLINDER, HYDRAULIC FRONT COUPLER	3104-2
(PILOT CONTROL)	1816-4	CYLINDER, LOADER BUCKETR	3165-4
COVER, FLOOR TO FRONT CONSOLE	1812-2	CYLINDER, MULTI-PURPOSE BUCKET	3102-13
COVER, FUSE PANEL	1816-8	CYLINDER, STABILIZER PINS	3348-4
COVER, LINKAGE	1812-2	CYLINDER, STEERING, (WITH MFWD)	0960-10
COVER, LOADER CONTROL	1816-12	CYLINDER, EXTENDIBLE DIPPERSTICK	3346-4
COVER, LOADER VALVE HYDRAULIC HOSES	3163-4	CYLINDER, FRONT AXLE STEERING	
COVER, MIDDLE FLOOR	1812-2	(WITHOUT MFWD)	0230-3
COVER, NO SHIFTER	1811-2		
COVER, OIL FILLER OPENING (TT061)	0400-1		
COVER, OPERATOR STATION	1927-2		
COVER, REAR FLOOR	1812-2		
COVER, ROCKER ARM (TT061)	0400-22		
COVER, STABILIZER CONTROL	1816-10		
COVER, STABILIZER CONTROL	1816-12		
COVER, STEERING COLUMN	1816-6		
COVER, THERMOSTAT (TT061)	0400-36		
COVER, TIMING GEAR (TT061)	0400-24		
COVER, WHEEL HUB (WITHOUT MFWD)	0230-4		

D

DAMPER, CRANKSHAFT TORSIONAL (TT061)	0400-49
DECALS	1320-2
DECALS, SPANISH	1320-6
DECALS, FRENCH	1320-4
DEFLECTOR KIT, RADIATOR	0510-4
DEFLECTOR, HEAT AND NOISE	1834-2
DELUXE LIGHTS	1673-6

ALPHABETICAL INDEX - CONTINUED

	PAGE		PAGE
DEVICE, CONTROLLED LOWERING, BOOM CYL. KIT	3363-20	ELECTRICAL CONNECTOR, MFWD SWITCH.....	1674-24
DEVICE, CONTROLLED LOWERING, CROWD CYL. KIT	3363-22	ELECTRICAL CONNECTOR, REAR WIPER SWITCH	1674-24
DIAGNOSTIC RECEPTACLE, LOAD SENSE	2160-6	ELECTRICAL CONNECTOR, REAR WORKING LIGHT	
DIFF LOCK SOLENOIDS	0360-6	S SWITCH	1674-24
DIFFERENTIAL ASSEMBLY WITH LOCK.....	0210-2	ELECTRICAL CONNECTOR, ROPS	1674-24
DIFFERENTIAL HOUSING.....	0201-2	ELECTRICAL CONNECTOR, SIDE WORKING LIGHT	
DIFFERENTIAL HOUSING WITH LOCK.....	0210-2	S SWITCH	1674-24
DIFFERENTIAL LOCK PLUMBING	0210-4	ELECTRICAL CONNECTOR, START AID SWITCH.....	1674-24
DIFFERENTIAL LOCK PUSH BUTTON	1674-12	ELECTRICAL CONNECTOR, TEMPERATURE, CONTR	
DIFFERENTIAL LOCK SWITCH	1674-12	OL	1674-24
DIFFERENTIAL QUILL	1011-2	ELECTRICAL CONNECTORS, ENGINE HARNESS	1674-18
DIFFERENTIAL SPIRAL BEVEL GEAR (MFWD)	0250-12	ELECTRICAL CONNECTORS, LOADER HYDRAULIC	
DIFFERENTIAL WITH LOCK	0210-2	COUPLER HARNESS.....	1674-22
DIFFERENTIAL, LIMITED SLIP (MFWD)	0250-10	ELECTRICAL CONNECTORS, PILOT CONTROL	1674-28
DIODE CONNECTOR.....	1674-18	ELECTRICAL CONNECTORS, PILOT CONTROL	
DIODE CONNECTOR.....	1674-20	(CAB).....	1674-30
DIODE, A/C.....	1674-16	ELECTRICAL CONNECTORS, PILOT COTROL,	
DIODE, A/C COMPRESSOR.....	1674-8	(CAB).....	1674-30
DIODE, FUSE BLOCK.....	1674-26	ELECTRICAL CONNECTORS, PILOT COTROL, SID	
DIODES	1674-8	E CONSOLE.....	1674-28
DIPPERSTICK EXTENDIBLE.....	3346-4	ELECTRICAL CONNECTORS, RIDE CONTROL HARN	
DIPPERSTICK EXTENDIBLE ARM CYLINDER	3346-4	ESS	1674-36
DIPPERSTICK, STANDARD.....	3346-2	ELECTRICAL CONNECTORS, ROOF HARNESS.....	1674-38
DIPSTICK TUBE, ENGINE OIL (TT061)	0400-30	ELECTRICAL CONNECTORS, RUNNING LIGHTS	1674-38
DIPSTICK TUBE, TRANSMISSION	0341-2	ELECTRICAL CONNECTORS, SELECTIVE FLOW.....	1674-32
DIPSTICK, ENGINE OIL (TT061)	0400-30	ELECTRICAL CONNECTORS, SELECTIVE FLOW, S	
DIPSTICK, OIL (TT061).....	0400-30	IDE CONSOLE	1674-32
DIPSTICK, TRANSMISSION	0341-2	ELECTRICAL CONNECTORS, SIDE CONSOLE.....	1674-24
DISK, BRAKE	1011-2	ELECTRICAL CONNECTORS, STEERING COLUMN.....	1674-24
DOME LIGHT.....	1811-4	ELECTRICAL CONNECTORS, STOP LAMPS.....	1674-38
DOORS, CAB.....	1814-2	ELECTRICAL CONNECTORS, TRANSMISSION HARN	
DP SWITCH KIT	2160-20	ESS	1674-20
DRAIN PACKAGE, ENVIRONMENTAL.....	1369-6	ELECTRICAL CONNECTORS, WORK LIGHTS.....	1674-38
DRAIN REGULATOR, STABILIZER VALVE.....	3162-12	ELECTRICAL HARNESS, CONTROL VALVE,	
DRAIN VALVE KIT, FINAL FUEL FILTER		MOUNTING BRACKET	1674-11A
(TT061).....	0400-42	ELECTRICAL LOADER COUPLER.....	1675-10
DRAIN VALVE KIT, PRIMARY FUEL FILTER		ELECTRICAL, FRONT COUPLER HARNESS.....	1674-5C
(TT061).....	0400-40	ELECTRICAL, PILOT ENABLE.....	1674-5A
DRAIN VALVE, RADIATOR	0510-2	ELECTRICAL, RIDE CONTROL	1675-2
DRIVE SHAFT YOKE (MFWD).....	0250-3	ELECTRICAL, RIDE CONTROL.....	1675-4
DRIVE SHAFT, UNIVERSAL (MFWD).....	0250-3	ELECTRONIC ETHER STARTING AID	0505-2
DRIVE SHAFT, REAR, TRANSMISSION	0325-1	ELEMENT, AIR CLEANER.....	0520-2
DRIVE WHEEL	0110-4	ELEMENT, FILTER.....	2160-20
DRIVE WHEEL, FRONT (MFWD)	0110-6	ELEMENT, FINAL FUEL FILTER (TT061)	0400-42
DRIVE, FAN WITH BELT TENSIONER (TT061).....	0400-60	ELEMENT, PRIMARY FUEL FILTER (TT061)	0400-40
DRIVE, REAR WHEEL	0110-2	EMBLEM, SMV	2008-2
DRIVE, PLANETARY (MFWD).....	0250-8	ENABLE SWITCH, REAR WIPER.....	1814-14
DRIVER LINK	3345-2	ENGINE COOLANT HEATER	0505-4
DRYER, RECEIVER, AIR CONDITIONING.....	1830-12	ENGINE COOLANT HEATER (TT061)	0400-56
DUAL BATTERIES	1671-4	ENGINE FRONT PLATE (TT061)	0400-27
DUAL BATTERY CABLES	1671-4	ENGINE GASKET SET, OVERHAUL (TT061)	0400-54
DUCTS, AIR CONDITIONING	1830-2	ENGINE HARNESS, ELECTRICAL CONNECT	
DUCTS, AIR CONDITIONING	1830-4	ORS.....	1674-18
DUCTS, CAB HEATER	1830-2	ENGINE MOUNT ISOLATOR.....	0540-2
DUCTS, CAB HEATER	1830-4	ENGINE MOUNTING BRACKET	0540-2
		ENGINE OIL DIPSTICK (TT061)	0400-30
		ENGINE OIL DIPSTICK TUBE (TT061).....	0400-30
		ENGINE OIL FILL INLET CAP (TT061).....	0400-1
		ENGINE OIL FILTER (TT061)	0400-6
		ENGINE OIL FILTER HEADER (TT061).....	0400-6
		ENGINE OIL PAN (TT061).....	0400-4
		ENGINE OIL PRESSURE REGULATING VALVE	
		(TT061).....	0400-28
		ENGINE OIL PRESSURE SWITCH.....	1674-8
		ENGINE OIL PUMP (TT061)	0400-8
		ENGINE OIL PUMP GEAR (TT061)	0400-8
		ENGINE OIL PUMP HOUSING (TT061).....	0400-8

E

EDGING, ISOLATOR.....	0510-2
ELBOW, EXHAUST (TT061).....	0400-14
ELECTRICAL ACCELERATOR.....	0515-2
ELECTRICAL CONNECTOR, A/C DIODE	1674-24
ELECTRICAL CONNECTOR, A/C SWITCH.....	1674-24
ELECTRICAL CONNECTOR, A/C WIRING HARNESS	1674-24
ELECTRICAL CONNECTOR, AIR SUSPENSION SEA	
T SWITCH.....	1674-24

ALPHABETICAL INDEX - CONTINUED

	PAGE		PAGE
ENGINE OIL PUMP INTAKE (TT061).....	0400-8	FIRST GEAR CLUTCH ASSEMBLY	0350-4
ENGINE OVERHAUL KIT (TT061)	0400-34	FIRST GEAR CLUTCH CARRIER.....	0350-4
ENGINE PISTON (TT061)	0400-26	FIRST GEAR, BELLVILLEWASHER.....	0350-4
ENGINE SHORT BLOCK ASSEMBLY (TT061).....	0400-32	FITTINGS, SWING CYLINDER.....	3363-12
ENGINE SIDE PANELS	1910-2	FLEXPLATE, TORQUE CONVERTOR	0350-1
ENGINE SIDE SHIELDS	1910-2	FLOOR COVER, REAR	1812-2
ENGINE SUPPORT	0540-2	FLOOR MATS	1812-2
ENGINE VENTILATING HOSE (TT061)	0400-10	FLOW CONTROL VALVE	3363-1A
ENGINE WIRING HARNESS	1674-8	FLUID, STARTING	0505-2
ENVIRONMENTAL DRAIN PACKAGE.....	1369-6	FLYWHEEL (TT061).....	0400-51
EVAPORATOR	1830-6	FLYWHEEL HOUSING (TT061).....	0400-52
EXHAUST ADAPTER (TT061).....	0400-14	FOOT CONTROL, FIFTH FUNCTION	3315-10
EXHAUST ELBOW (TT061).....	0400-14	FOOT CONTROL, SIXTH FUNCTION.....	3315-12
EXHAUST EXTENSION	0530-2	FORKLIFT FORKS	3103-2
EXHAUST MANIFOLD (TT061).....	0400-15	FORKS, PALLET	3103-2
EXHAUST VALVE (TT061).....	0400-12	FORKS,LOADER FORKLIFT	3103-2
EXPANSION VALVE.....	1830-6	FORWARD CLUTCH ASSEMBLY	0350-12
EXTENDIBLE ARM LOCKING PIN	3346-4	FORWARD CLUTCH CARRIER	0350-12
EXTENDIBLE ARM PAD.....	3346-4	FORWARD, BELLVILLEWASHER	0350-12
EXTENDIBLE ARM WEARSTRIPS	3346-4	FORWARD,NEUTRAL AND REVERSE CONTROL LEVER.....	0315-2
EXTENDIBLE DIPPER PEDAL (PILOT CONTROL).....	3315-11A	FOURTH GEAR CLUTCH ASSEMBLY.....	0350-10
EXTENDIBLE DIPPERSTICK.....	3346-4	FOURTH GEAR CLUTCH CARRIER	0350-10
EXTENDIBLE DIPPERSTICK AUXILIARY HYDRAUL ICS	3363-18	FOURTH GEAR, BELLVILLEWASHER	0350-10
EXTENDIBLE DIPPERSTICK BUCKET, CYLINDER HYDRAULIC HOSES	3363-8	FRAME, CAB	1811-4
EXTENDIBLE SECTION SHUT-OFF PLUG	3362-20	FRAME, COUNTERWEIGHT.....	1749-3
EXTENDIBLE SECTION, BACKHOE VALVE	3362-20	FRAME, FORKLIFT COUPLER.....	3103-2
EXTENSION CYLINDER.....	3365-14	FRAME, MAIN FRAME	1740-2
EXTENSION CYLINDER HYDRAULICS HOSES (WITH EXTENDIBLE DIPPERSTICK)	3363-14	FRAME, ROPS	1811-2
EXTENSION, EXHAUST	0530-2	FRAME, SWING	3343-2
EXTERNAL REAR VIEW MIRROR	2002-3	FRENCH LABELS.....	1320-4
EXTINGUISHER, FIRE	2003-2	FRESH AIR FILTER	1816-12
		FRONT AXLE (MFWD).....	0250-2
		FRONT AXLE (WITHOUT MFWD)	0230-1
		FRONT AXLE HOUSING (MFWD)	0250-4
		FRONT AXLE HOUSING (MFWD)	0250-6
		FRONT AXLE HOUSING (MWFD)	0250-4
		FRONT AXLE HOUSING (WITHOUT MFWD).....	0230-2
		FRONT AXLE HUB (MFWD).....	0250-6
		FRONT AXLE PIVOT PIN (MFWD).....	0250-2
		FRONT AXLE PIVOT PIN (WITHOUT MFWD).....	0230-1
		FRONT AXLE SWIVEL HOUSING (WITHOUT MFWD).....	0230-3
		FRONT AXLE UNIVERSAL DRIVE SHAFT (MFWD).....	0250-6
		FRONT AXLE WHEEL HUB(WITHOUT MFWD).....	0230-4
		FRONT CONSOLE	1816-8
		FRONT CONSOLE COVER,FLOOR	1812-2
		FRONT CONSOLE SEAL	1811-2
		FRONT COUNTERWEIGHT	1749-2
		FRONT COUPLER CYLINDER	3104-4
		FRONT COUPLER VALVE.....	3163-6
		FRONT COUPLER, HYDRAULIC	3104-2
		FRONT COUPLER, HYDRAULIC (HOSES).....	3163-2
		FRONT COVER (TT061)	0400-60
		FRONT DRIVE WHEEL (MFWD).....	0110-6
		FRONT DRIVE WHEEL (W/O MFWD)	0120-2
		FRONT DRIVE WHEEL VALVE STEM (MFWD).....	0110-6
		FRONT FLOOR MAT	1812-2
		FRONT PLATE, ENGINE (TT061)	0400-27
		FRONT WINDSHIELD WIPER MOTOR	1814-10
		FUEL COOLER.....	0560-4
		FUEL FILTER LINES (TT061).....	0400-18
		FUEL GAUGE SENDER	0560-2
		FUEL HEATER KIT (TT061)	0400-42
		FUEL HOSES	0560-2
		FUEL INJECTION LINES (TT061).....	0400-16
		FUEL INJECTION PUMP (TT061).....	0400-16
F			
FAN DRIVE (TT061)	0400-60		
FAN DRIVE BELT	0510-2		
FAN DRIVE PULLEY (TT061).....	0400-60		
FAN SHROUD.....	0510-2		
FAN SHROUD, RADIATOR.....	0510-2		
FAN, ALTERNATOR.....	1672-4		
FENDERS.....	1927-2		
FIFTH FUNCTION FOOT CONTROL.....	3315-10		
FIFTH FUNCTION PEDAL.....	3315-10		
FIFTH FUNCTION PEDAL (PILOT CONTROL).....	3315-11A		
FILTER ELEMENT	2160-20		
FILTER ELEMENT, PILOT CONTROL.....	3363-1A		
FILTER HOSES, HYDRAULIC	2160-2		
FILTER HOSES, HYDRAULIC	2160-4		
FILTER, BREATHER, HYDRAULIC RESERVOIR	2160-10		
FILTER, CHARGE PUMP	0360-1		
FILTER, ENGINE OIL (TT061).....	0400-6		
FILTER, FINAL FUEL (TT061).....	0400-42		
FILTER, FRESH AIR	1816-12		
FILTER, HYDRAULIC OIL.....	2160-20		
FILTER, OIL (TT061)	0400-6		
FILTER, PRIMARY FUEL (TT061).....	0400-40		
FILTER, TRANSMISSION.....	0360-1		
FILTER,LOW PRESSURE AUXILIARY KIT	3363-28		
FILTERS, AIR CLEANER.....	0520-2		
FINAL FUEL FILTER (TT061).....	0400-42		
FIRE EXTINGUISHER	2003-2		

ALPHABETICAL INDEX - CONTINUED

	PAGE		PAGE
FUEL INJECTION PUMP DRIVE GEAR (TT061)	0400-16	HARNES, SIDE CONSOLE WIRING,	
FUEL TANK	0560-2	CAB	1674-4
FUEL TANK CAP	0560-2	HARNES, TRANSMISSION, CONNECTORS, ELECT	
FUEL TANK STRAINER	0560-2	RICAL	1674-20
FUEL TRANSFER PUMP (TT061)	0400-44	HARNES, WIRING, A/C	1674-16
FUSE BLOCK	1674-26	HEAD, CYLINDER (TT061)	0400-12
FUSE BLOCK DIODE	1674-26	HEAD, FINAL FUEL FILTER (TT061)	0400-42
FUSE BLOCK RELAY	1674-26	HEADER, ENGINE OIL FILTER (TT061)	0400-6
FUSE PANEL COVER	1816-8	HEADLINER LAMP	1811-4
		HEADLINER, CAB	1811-4
		HEADLINER, ROPS	1811-2
G		HEAT AND NOISE BARRIER	1834-2
GAS PEDAL	0515-2	HEATER HOSES	1830-8
GASKET KIT, ENGINE OVERHAUL (TT061)	0400-54	HEATER KIT, FUEL (TT061)	0400-42
GASKET KIT, TUNE-UP (TT061)	0400-53	HEATER PLUMBING	1830-8
GASKET, AIR INLET (TT061)	0400-20	HEATER VALVE CONTROL CABLE	1830-6
GASKET, CYLINDER HEAD (TT061)	0400-12	HEATER, ENGINE COOLANT	0505-4
GASKET, EXHAUST MANIFOLD (TT061)	0400-15	HEATER, ENGINE COOLANT (TT061)	0400-56
GASKET, FRONT CONSOLE	1811-2	HIGH AMBIENT BAFFLE	0510-4
GASKET, FRONT PLATE (TT061)	0400-27	HIGH PRESSURE SWITCH	1830-6
GASKET,OIL PAN (TT061)	0400-4	HINGE PINS, MULTI-PURPOSE BUCKET	3102-8
GASKET,ROCKER ARM COVER (TT061)	0400-22	HINGES, CAB DOORS	1814-2
GASKETS, INTERMEDIATE PLATE	0360-6	HOLDER, SWING LOCK PIN	1811-2
GEAR, CRANKSHAFT (TT061)	0400-2	HOOD	1910-2
GEAR, ENGINE OIL PUMP (TT061)	0400-8	HOOD LATCH	1910-2
GEAR, FLYWHEEL RING (TT061)	0400-51	HOOD SUPPORT	1910-2
GEAR, FUEL INJECTION PUMP DRIVE (TT061)	0400-16	HORN	2004-2
GEAR, PLANET (MFWD)	0250-8	HOSE SEGMENT	3348-4
GEAR, PLANETARY PINION	0201-4	HOSE, AIR CLEANER	0520-2
GEAR, PLANETARY RING	0201-4	HOSE, ENGINE VENTILATING (TT061)	0400-10
GEAR, RING (MFWD)	0250-8	HOSE, HYDRAULIC, RIDE CONTROL	2160-12
GEAR, SPIRAL BEVEL WITH LOCK	0210-2	HOSE, WINDSHIELD WASHER	1814-12
GEAR,BEVEL DRIVE (MFWD)	0250-10	HOSES, ATTACHMENT KIT	3363-44
GEAR,DIFFERENTIAL SPIRAL BEVEL (MFWD)	0250-12	HOSES, FRONT HYDRAULIC COUPLER	3163-2
GRILLE	1921-2	HOSES, FUEL	0560-2
GRILLE HOUSING	1921-2	HOSES, HEATER	1830-8
GRILLE SCREEN	1921-2	HOSES, HYDRAULIC	3363-28
GROUND CABLE	1674-8	HOSES, LOADER BUCKET CYLINDER HOSES	3163-4
GROUND STRAP	1674-8	HOSES, MAIN HYDRAULIC	2160-2
GUARD, LOADER VALVE HYDRAULIC HOSES	3163-4	HOSES, MAIN HYDRAULIC	2160-4
GUARD, RADIATOR FAN	0510-2	HOSES, MAIN HYDRAULIC, LOAD SENSE	2160-6
GUARD,STABILIZER KIT	1746-2	HOSES, MULTI-PURPOSE BUCKET	3102-10
		HOSES, MULTI-PURPOSE BUCKET	3102-16
H		HOSES, PLUMBING, HEATER	1830-8
HARNES, ANCHOR, TIE BAND MOUNT	1673-6	HOSES, RADIATOR	0510-2
HARNES, AUXILIARY CONTROL SWITCH	1674-11A	HOSES, STEERING (WITHOUT MFWD)	0960-8
HARNES, ENGINE WIRING	1674-8	HOSES, STEERING FOR MECHANICAL	
HARNES, ENGINE, CONNECTORS, ELECT		FRONT WHEEL DRIVE	0960-6
RICAL	1674-18	HOSES, SWING CYLINDER	3363-12
HARNES, LOAD COUPLER CONTROL CHASSIS	1674-5C	HOSES, THIRD FUNCTION HYDRAULIC HOSES	3163-4
HARNES, LOADER COUPLER, CAB	1674-5C	HOSES,AIR CONDITIONING COMPRESSOR	1830-12
HARNES, LOADER HYDRAULIC COUPLER, CONNE		HOSES,AIR CONDITIONING COMPRESSOR,	
CTORS, ELECTRICAL	1674-22	RECEIVER DRYER	1830-12
HARNES, PATTERN SELECTOR	3362-32	HOSES,RECEIVER DRYER,	
HARNES, PILOT ENABLE WIRING	1674-5A	AIR CONDITIONING COMPRESSOR	1830-12
HARNES, QUICK COUPLER	1674-5C	HOUSING AXLE	0201-2
HARNES, RADIO	2001-2	HOUSING, BELL	0341-4
HARNES, RIDE CONTROL	1674-5C	HOUSING, BRAKE	1011-2
HARNES, RIDE CONTROL	1675-2	HOUSING, BRAKE VALVE	1060-2
HARNES, RIDE CONTROL	1675-4	HOUSING, DIFFERENTIAL	0201-2
HARNES, RIDE CONTROL	2160-12	HOUSING, DIFFERENTIAL WITH LOCK	0210-2
HARNES, ROOF WIRING	1673-6	HOUSING, ENGINE OIL COOLER (TT061)	0400-38
HARNES, SIDE CONSOLE WIRING,		HOUSING, FRONT INSTRUMENT PANEL	1816-8
CAB	1674-2	HOUSING, GRILLE	1921-2
		HOUSING, PARK BRAKE	1111-2
		HOUSING, SIDE INSTRUMENT PANEL	1816-10
		HOUSING, SIDE INSTRUMENT PANEL	1816-12